

ALSHRIQI
Safety Tools



الشريقي
لأدوات السلامة





الشريقي لأدوات السلامة

إحدى المؤسسات الوطنية العاملة على تطوير وتقديم المملكة العربية السعودية ، وذلك عن طريق ربطها بأحدث التقنيات العالمية في مجال أنظمة الإطفاء والإنذار المبكر المختلفة وأجهزة ومعدات وأنظمة السلامة ومكافحة الحريق.

طبيعة نشاط المؤسسة :

توريد وتركيب وتشغيل وصيانة أجهزة ومعدات السلامة وإطفاء الحريق وأجهزة الإنذار المبكر بالإضافة إلى صيانة طفايات الحريق بجميع أنواعها وأحجامها، و توريد وتركيب وتشغيل أنظمة الدوائر التلفزيونية المغلقة CCTV و أنظمة التحكم في صلاحية الدخول ACCESS CONTROL . يعمل في المؤسسة مجموعة من أكفأ المهندسين والفنيين والعمال المدربة في تركيب وتشغيل وصيانة أنظمة السلامة المتطورة .

قامت المؤسسة بتنفيذ الكثير من المشاريع داخل المملكة لعدد من المباني والمدارس والمستودعات والمشاريع المختلفة الكبيرة .

رؤيتنا :

المالية والإدارة الكفؤ للأصول والإستخدام الأمثل للموارد المتاحة والرعاية الكاملة لمنسوبينا .

إن **الشريقي لأدوات السلامة** تضع أهدافها بصورة لا يمكن أن تتنافس من قبل الآخرين و برؤية واضحة في أن تصبح الرائدة في مجالات عملها بالسوق والقادرة على تأمين الجديد من المنتجات والخدمات عالية الجودة والتقنية ، وسوف ندعم أهدافنا ونحافظ على دورنا الريادي بعمليات نقل التقنيات المستحدثة للمنطقة عن طريق تأسيس شركات عمل إستراتيجية مع الشركات والمراكز التدريبية الكبيرة ذات الخبرات والقدرات العالية .

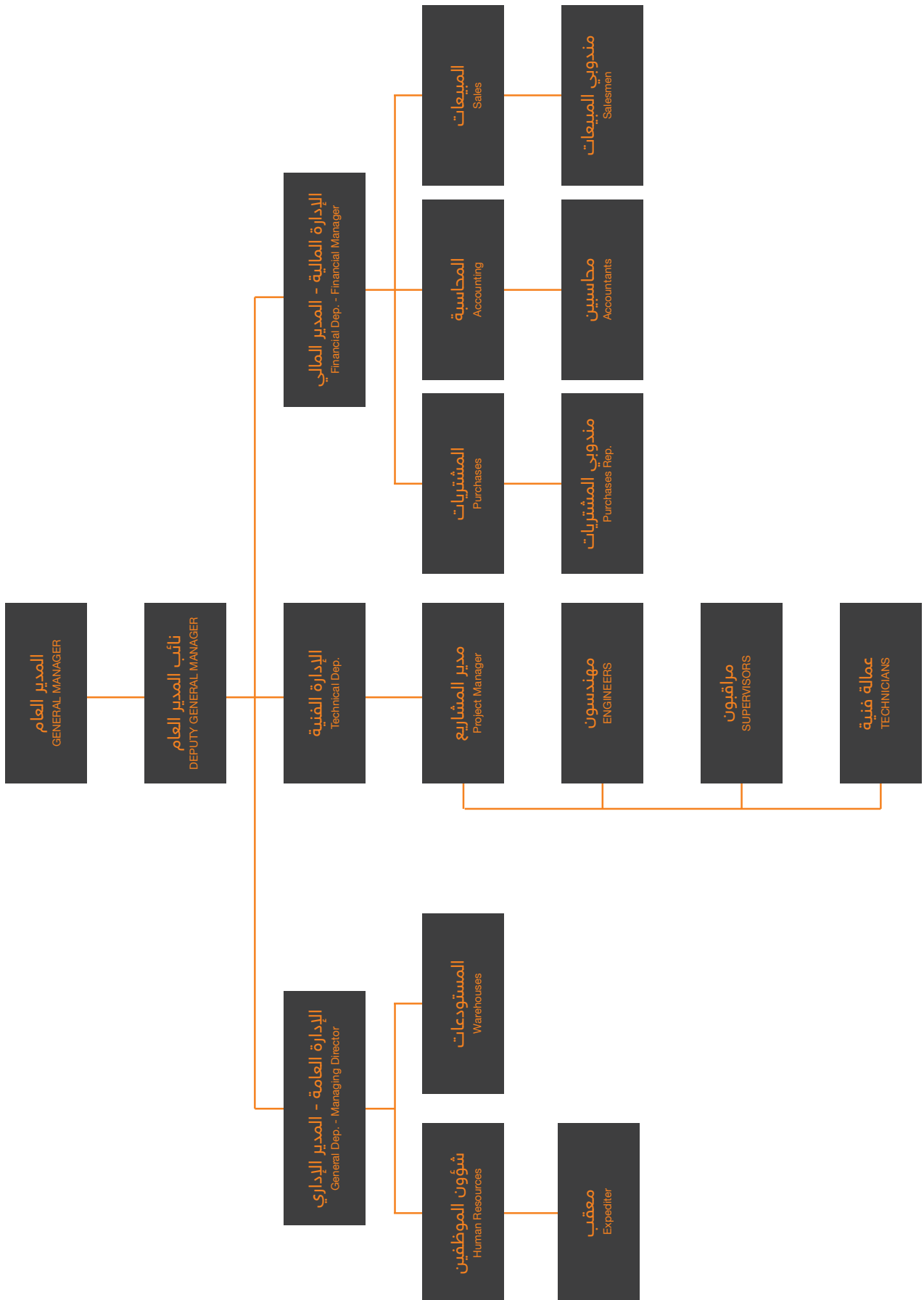
أن نستثمر للأفضل في تقديم خدمات متميزة ذات مستوى مهني راق وجودة عالية في جميع المجالات التي نخدم فيها عملائنا، وأن نبذل قصار جهدنا واضعين نصب أعيننا هذه المبادئ لأن نتوسع وتمتد خدماتنا وتنافس بقوة داخل السوق السعودي والخليجي و منطقة الشرق الأوسط عموماً.

إن رؤيتنا تعتمد على جودة الأداء والتطبيق التام والصارم للشعار الذي سيتقيد به كافة العاملين والموظفين لدينا ألا و هو (العميل أولاً) ، وسيتحقق هدفنا المعلن من خلال هيكلية إدارية تعمل على تقييم الأداء الفردي والجماعي في المؤسسة من خلال التخطيط الفعال للموارد

رسالتنا :

للمؤسسة، و سيستمر كذلك إلتزامنا دونما كلل تجاه تأمين الخدمات والسلع بمستوى من المهنية الراقية والجودة العالية التي تفوق توقعات عملائنا والمواصفات والمقاييس والامتطلبات المحددة في عقودنا معهم .

إن رسالتنا في **الشريقي لأدوات السلامة** هي أن نخلق التوازن المطلوب بين أطراف العمل الثلاثة : (العميل - المؤسسة - الموظف) مما يحقق الإستفادة المرجوة لكل منهم، بينما يتواصل سعينا الدؤوب بالمؤسسة للتطوير والتقدم المستمرين لتحقيق المصلحة العليا



سابقة الأعمال :

قصر صاحب السمو الملكي الأمير احمد بن عبدالعزيز آل سعود - الرياض حي الهدا

الانظمة المركبة :

- نظام الاطفاء بالغاز لمولدات الكهربائية (فايربرو)
- نظام اطفاء الحرائق في المطابخ (كيتشن هود)

شركة زعانف القابضة - الرياض - حي حطين

هو عبارة عن مجمع سكني مكون من 32 وحدات سكنية و 3 مباني ادارية و مجمع تجاري مكون من ثلاث طوابق .

الانظمة المركبة :

- انظمة الانذار المبكر من الحرائق العادي والمعنون
- انظمة الانذار المبكر من الحرائق الوايرليس .
- نظام الاطفاء من الحرائق الرش الآلي وصناديق الحريق وتركيب غرف مضخات الحريق .

شركة العنوان للتطوير العقاري

وتضم خمس مواقع مختلفة وهي عبارة عن عمائر تجارية مكتبية وسكنية في عدة مناطق في مدينة الرياض .

الانظمة المركبة :

- انظمة الانذار المبكر من الحرائق العادي والمعنون
- نظام الاطفاء من الحرائق الرش الآلي وصناديق الحريق وتركيب غرف مضخات الحريق .

					
			الباسم مول		
					
				مدارس غانا العالمية	
		مجمع عيادات الدكتور عبد العزيز الشعلان			
				مصنع رحى لإنتاج محطات معالجة المياه	
					
				دار للترارات العالمية Dar optics	
					
					الصندوق الخيري الاجتماعي SOCIAL CHARITY FUND



FIRE FIGHTING SYSTEMS

أنظمة مكافحة الحريق



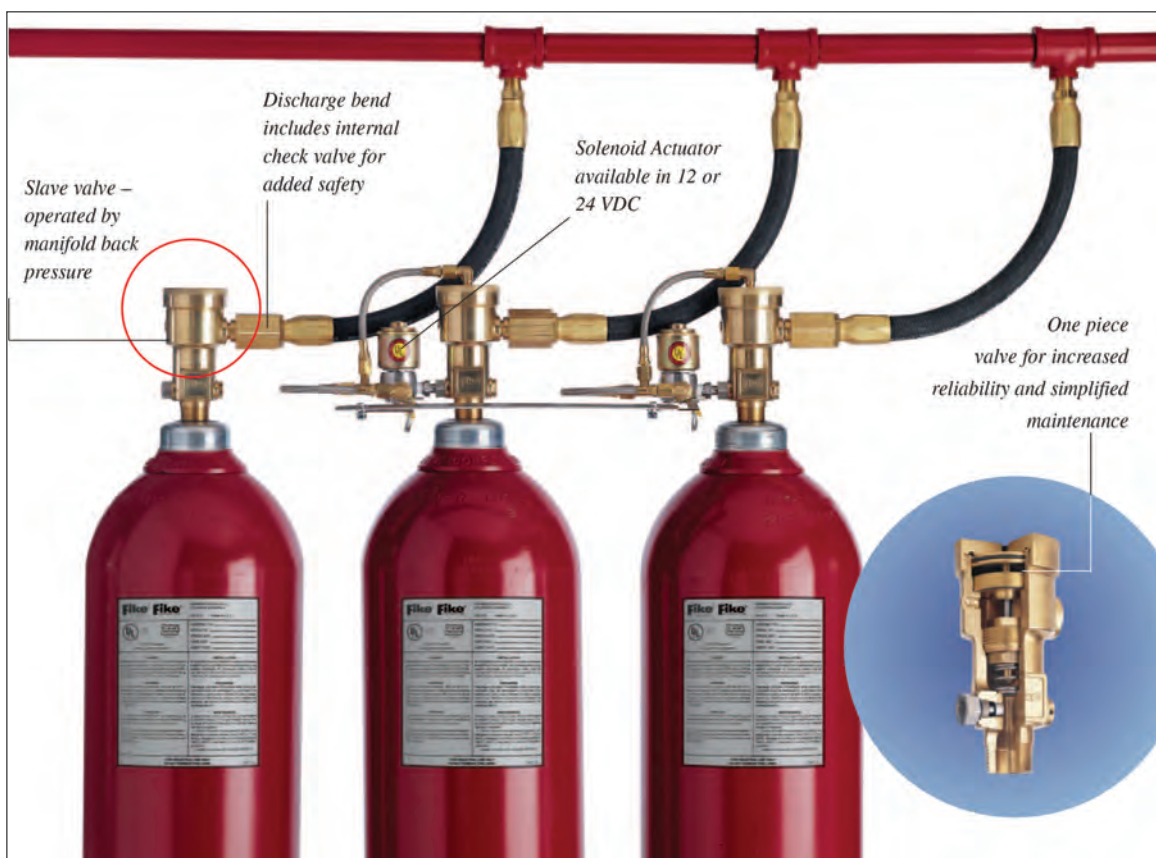
GAS

Fire Fighting Systems

أنظمة مكافحة الحريق بالغاز

CARBON DIOXIDE (CO2)

Carbon dioxide is an effective fire suppression agent applicable to a wide range of fire hazards. Carbon dioxide works quickly, with no Residual clean-up associated with a system discharge which translates into minimal business interruption.



FM-200®

AGENT - HEPTA FLUOROPROPANE (FM-200®)

The extinguishing agent used in Rotarex Pre-engineered Fire-Suppression systems is Heptafluoropropane, more commonly known by its ASHRAE designation : FM-200®.

FM-200® is a colorless, odorless, liquefied compressed gas.

(See the Physical Properties Table).

It is stored as a liquid, but dispensed into the hazard as a colorless, electrically-nonconductive, gaseous vapor due to its relatively low boiling point.

FM-200® has been tested and verified to be safe for use in occupied Spaces when used as specified in the U.S. EPA Significant New Alternative Policy (SNAP) rules. Tests have proven that exposure to FM-200® is safe and effective in extinguishing fires at low concentrations; most of which are well below the EPA's Maximum exposure levels. FM-200® is approved for use in occupied areas up to 10.5% concentration by volume with a mandated egress time of 5 minutes or less.



PHYSICAL PROPERTIES OF FM-200®

Chemical Name	Heptafluoropropane CF ₃ CHF ₂ F ₃
Molecular Weight (g/mol)	170.03
Boiling Point @ 760 mm Hg	-16.4°C
Freezing Point	-131°C
Critical Temperature	101.7°C
Critical Pressure (bar)	29.1
Critical Volume (cc/mol)	274
Critical Density (kg/m ³)	621
Specific Heat, Liquid (kJ/kg @ 25°C)	1.184
Specific Heat, Vapor (kJ/kg °C) @ constant pressure of 1	0.808
Heat of Vaporization (kJ/kg °C) at Boiling Point	132.6
Thermal Conductivity (W/m °C) of Liquid @ 25°C	0.069
Viscosity, Liquid @ 25°C (centipoises)	0.184
Global Warming Potential	2900
NOAEL (VOL %)	9
LOAEL (VOL %)	10.5
Ozone Depletion Potential	0
US EPA SNAP Approval	Accepted
Estimated Atmospheric Lifetime	31 – 42 years
LC50 (Rats; 4 hrs – ppm)	>800,000 ppm



Manual actuator

Includes: pressure gauge, connection for filling adaptor and fittings to connect to sensor tubing
Large, easily visible knob
Yellow safety collar



Key Features

Includes: quick coupling connector and threaded end-of-line connection



End of Line Plug

Basic plug to seal the end of line



End of Line Gauge

Includes: check valve, pressure gauge & fittings to connect to sensor tubing



Solenoid Actuator

Includes: pressure gauge, Connection for filling adaptor, Fittings to connect to sensor Tubing.
For supplemental actuation via Electronic sensor or control room



Key Features

Coils around the entire length of the sensor Tube to provide a protective casing



Heavy duty sensor tubing

Outside Diameter: 0.234" / 6 mm
Inside Diameter: 0.156" / 4 mm
Color: Black RAL 9005
Min. bend radius: 5.9" / 150 mm



Standard Sensor tubing

Outside Diameter: 0.234" / 6 mm
Inside Diameter: 0.156" / 4 mm
Color: Red RAL 3000
Min. bend radius: 4" / 100 mm

HFC-227ea

WHY HFC-227ea ?

- Inert on people & safe on environment
- lower design concentration, safe and non toxic
- Active on fire with complete extinguishment capability designed to fully discharge within seconds.
- three dimensional to knock down fires in hidden spaces.
- Ability to recover quickly from business disruption.
- No cost of down time.
- Zero Ozone depletion potential.
- Superior to water and dry chemicals.
- Suitable for class A, B, C fires.
- HFC-227ea is an engineered and Pre-engineered computer designed to protect specific hazards.
- HFC-227ea clean agent system you assured of fast, efficient, environmentally safe fire extinguishment.
- Recognized and certified by the top independent listing & approval parties NFPA, UL, FM, U.S.EPA.



NOVEC-1230

WHY NOVEC-1230 ?

- NOVEC-1230 system cylinder valve assemblies are equipped with pressure differential high flow rate valves in order to meet the rapid discharge time of 10 seconds as specified in NFPA 2001.
- NOVEC-1230 has wide filling range from 23lbs to 850lbs allowing for varied head outlets ranging from 1 to 3 >
- NOVEC-1230 cylinder head valves have been designed to be actuated electrically, pneumatically or mechanically to make it suitable for different design applications.
- 3M™ NOVEC 1230™ is colorless, electrically non-conductive fluid chemical known as fluoro-ketone FK-512-1-.
- 3M™ NOVEC 1230™ a breakthrough in fire protection science has a 20 year blue sky warranty against regulatory bans
- 3M™ NOVEC 1230™ offers a unique combination of safety low environmental impact and extinguishing performance.

THERMO-ACT

Thermo-act systems are the advanced technology of automatic fire suppression systems. The systems provide a self-activating suppression system that suppresses fires in seconds. They are simple design and installation with low maintenance, highly cost effective and reliable. The electrical or pneumatic sources shall not be required to our thermo-act systems. The systems can be used in the presence of an increased risk of fire.

Thermo-act systems utilize fire flexible tube for fire detection. Thus, the fire detection and extinguishing system is not required to detect and discharge.

Thermo-act systems can be designed with commercial available agents including clean agent, wet chemical, foam, and dry powder. The systems may be arranged as:

Indirect System :

Thermo-act indirect system for low pressure agent as shown below uses the tube as a fire detection device only. the fire suppression agent is delivered through a special copper or stainless steel tubing system. once the tube ruptures due to heat exposure, the drop in pressure activates the indirect valve to direct the flow of suppression agent to diffuser nozzles via a fixed tubing system. this system is usually used in large areas.



direct System :

Thermo-act direct system for low pressure agent as shown below uses the flexible tube as both the detection device and extinguishing discharge system. In case of fire, the section of tube most exposed to heat will rupture forming a discharge nozzle. The suppressant agent is then completely released due to pressure drop in the tube.



System Components :



Flexible Tube

- acts as a multi-sensor
- made of a high-tech polymer
- combines
- long-time resistance
- flexibility
- temperature sensitivity
- when bursting at the hottest spot, it ruptures as a nozzle shape opening
- Different temperature Rating



Cylinder

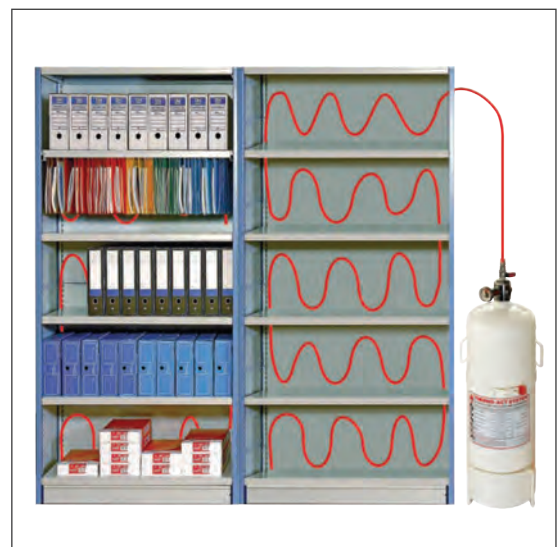
The cylinders are used to store the extinguishing agent

Models:

Two different sizes of cylinders are available to hold different Capacities of extinguishing agent



Head Valve with Pressure Gauge



FIREPRO SYSTEM

FirePro.

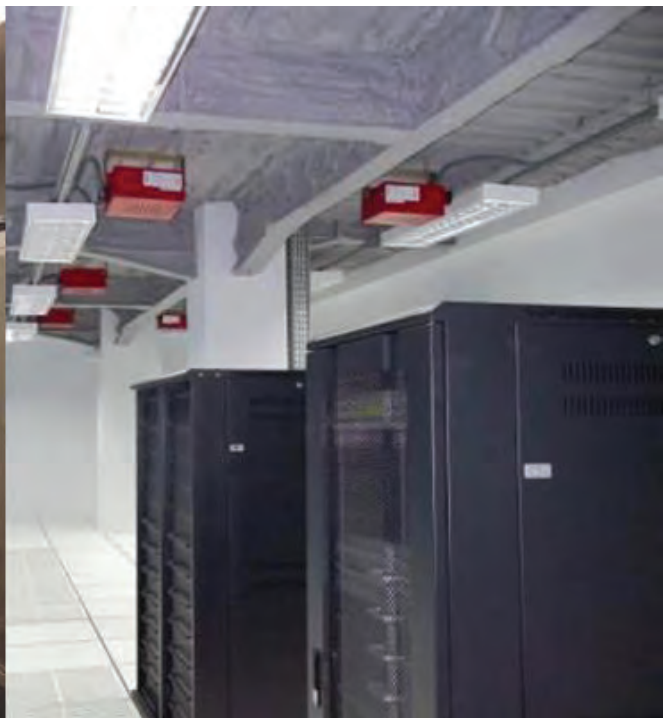
Properties :

Potassium is an alkali metal. Apart from an inert gas configuration, the elements of this group, the alkali metals, have a single s electron that can easily be split off. Potassium consequently has a very simple, ionic chemistry



Advantages / Characteristics :

- Most Number of Certificates, Listings, Approvals Test Report
- Non Pyrotechnic – Patented Technology
- Electrical and Thermal Activation – Solid to Gaseous Aerosol Phase
- Extinguishes Fire Chemically Without Removing Oxygen
- ‹Total Flooding› Approach
- Easy Design Calculation
- Environmental & Eco Friendly
- No Corrosion
- No Effect On Equipment Operation
- Safe, Non Toxic
- No Pipework, Pressure Cylinders, No Filling
- Highly Space Saving, Much Lower Installation/Maintenance Costs/Time
- Solutions For Most Applications
- Worldwide Installations In Over 75 Countries



FOAM

Fire Fighting Systems

أنظمة مكافحة الحريق بالرغوة

FOAM BLADDER TANK

Foam Bladder Tank Proportioning System is designed to inject foam concentrate into a suitable water supply and automatically proportion foam concentrate over a wide range of flows and pressures.

Material: Carbon Steel / Stainless Steel
Finish : Red



VERTICAL TYPE

Capacity:
25 - 1500 Gallons (95 - 5678 Liters)

HORIZONTAL TYPE

Capacity:
100 - 3000 Gallons (379 - 11,356 Liters)



FIRE MONITORS

Fire monitors are designed to accommodate foam which has been injected in the upstream piping.
fire monitors can be used in trucks and fixed fire protection systems to protect high hazards.

AVAILABLE MODEL TYPES:

Fixed, Portable and Remote-Controlled.

AVAILABLE OPERATION TYPES:

Single Wheel, Double Wheel, Lever and Electric



FOAM CONCENTRATES

High expansion foam concentrates [1 - 3%]
alcohol type foam concentrates [atc]
fluoro protein foam concentrates

foam concentrates for fires of class a
aqueous film forming foam concentrates
[3% - 6%] - ul listed



LOW EXPANSION FOAM BRANCH PIPES

Low Expansion Branch pipes
are air aspirating type made of
aluminum tube and cast bronze.

It is ideal for use with all foam types on deck
gun or fixed monitor with foam pick up
hose. Foam expansion rate up to 14.



PRESSURE PROPORTIONER

Pressure Proportioner (Ratio Controller) is used to produce constant preset foam solution in pressure proportioner systems. It is available in various flow rates. Test Pressure: 25 Bar

Finishing: Red Epoxy Coated
Connection Flange: ANSI B16.5 Class 150#
Flow Rate Range: 270 LPM@ 14 Bar - 18500 LPM@ 14 Bar



PRESSURE PROPORTIONER

Inline Proportioner offers a simple, inexpensive method of proportioning when the water supply pressure is reasonably high. Each proportioner is designed for a set water discharge rate at a set water pressure. However, higher or lower inlet water pressures result in an increase or decrease in

water flow with a change in proportioning. Test Pressure: 25 Bar
Finishing: Red Epoxy Coated OR Natural Finish
Connection Flange: ANSI B16.5 Class 150#
Flow Rate Range: 75 LPM@ 7 Bar - 2750 LPM@ 7 Bar



FOAM SYSTEM

Foam System unit is constructed with a heavy duty tank with corrosion proof coating. Two external nitrogen cylinders are provided for pressurizing the tank. One unit of skid mounted hose reel also available with 30Meter hose.

FEATURES :

Various selections of educators, hoses or nozzles are available.
Custom size design available with tank capacities and hose reels.
Pressure Gauge is available to indicate the system pressure.



FOAM MASTER

Foam Master are ideal for rapid deployment of foam to flammable liquid fires and chemical spills. It can be operated by one person.

COMPONENTS:

Foam Tank: Carbon Steel.
Stainless Steel also Available

Foam Eductor: 2», 1% - 6% Adjustable Proportioning
Foam Branch Pipe
Fire Hose: 1 3/4» dia or 1 1/2» 15M (2 nos.)
Foam Branch Pipe with Ball Valve
Options: Special foam nozzles and branch pipes available as per request



WATER

Fire Fighting Systems

أنظمة مكافحة الحريق بالماء

Mueller Co.

PENTAIR
AURORA

KSB

tyco

GLOBE

FIRE HYDRANT

Performance and longevity are the real tests of a fire hydrant. Superior flow Characteristics, 250 psig rating, easy operation and maintenance and life extending Features are among the benefits

of installing the mueller® super centurion 250™ 3-way fire hydrant. Plus, it's made in our u.s.a. Plant that is iso 9001 certified, And backed by a 10-year limited warranty on materials and workmanship.



FEATURES :

- Hold-Down Nut
- Anti-Friction Washer
- Oil Filler Plug
- Sealed Oil Reservoir
- Dual O-Ring Seals
- Field-Replaceable Hose And Pumper
- Nozzles
- Full Flow
- Heavy-Duty, Non-Kinking Chains
- Stainless Steel Safety Stem Coupling
- Zinc-Plated Bolts And
- Safety Flange
- 250 Psig Working Pressure Rating Main Valve Operation
- Drain Valve
- Bronze Upper Valve Plate
- Bronze Seat Ring
- Reversible, Compression-Type Main Valve
- Cap Nut
- O-Ring Flange
- Coatings Inside And Out Resist
- Ravages Of The Environment

FIRE PUMPS

HORIZONTAL SPLIT CASE

- UL Listed/FM Approved/NFPA-20 Design
- Flows from 250 to 5000 GPM
- Pressures from 40 to 490 PSI
- For Commercial and Industrial Use
- Diesel and Electric Driven



VERTICAL SPLIT CASE

- UL Listed/FM Approved/
NFPA-20 Design
- Flows from 250 to 2500 GPM
- Pressures from 40 to 200 PSI
- For Commercial and Industrial Use
- Space Saving Design



HORIZONTAL SPLIT CASE DIESEL DRIVE FIRE PUMPS

- UL Listed/FM Approved/NFPA-20 Design
- For Commercial, Industrial and Marine Use
- Diesel and Electric Driven Available
- Lower Initial Cost
- Quicker Delivery with Red Hot Quick Ship Program
- Ease of Maintenance



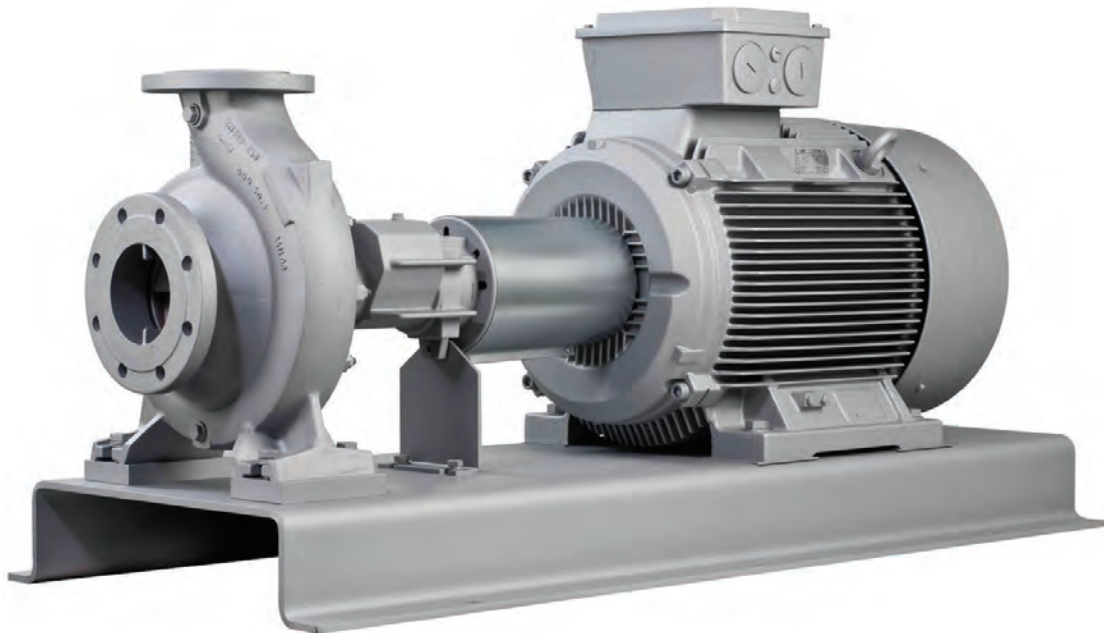
FIRE PUMPS

KSB PUMPS ETANORM

World-class quality of Fire Fighting Pumps designed to cater every buildings' safety requirements against fire hazards. Driven by more than 140 years of global experiences in producing high quality pumps, valves, and related systems for

energy, oil and gas, mining, water and sewage, as well as building services and industrial sectors.

Particularly for Fire Fighting Pumps, KSB has enjoyed over 40 years' expertise in providing protection against fire hazards.



NFPA 20 STANDARD

KSB Fire Fighting Pumps are specifically designed to meet the NFPA 20 standard .

ISO 9001 CERTIFICATION

In addition, value added served by the certification which ensures the quality of system applied to each process of assembling, repair and other related services.

FIRE PUMPS

CENTRIFUGAL END SUCTION FIRE PUMPS

FLOW CAPACITY: 50 gpm - 750 gpm
PRESSURE RANGE: 68 - 216 psi
(4.69 - 14.48 bar)
MAX. WORKING PRESSURE: 200
psi - 250 psi



CENTRIFUGAL HORIZONTAL SPLIT-CASE FIRE PUMPS

FLOW CAPACITY: 300 gpm - 1500
gpm
PRESSURE RANGE: 88 - 237 psi
(9.03 - 16.06 bar)
MAX. WORKING PRESSURE: 220
psi - 319 psi



VERTICAL TURBINE FIRE PUMPS

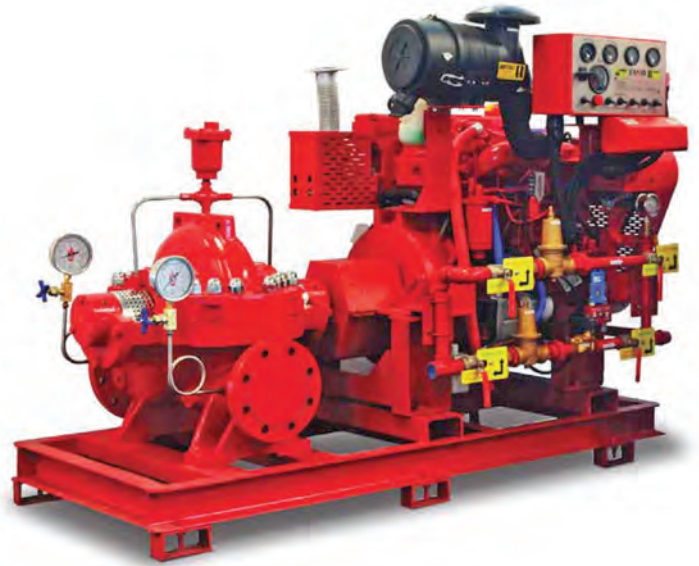
FLOW CAPACITY: 200 gpm - 2000
gpm
PRESSURE RANGE: 40 - 355 psi
MAX. WORKING PRESSURE: 290
psi - 395 psi



FIRE PUMPS

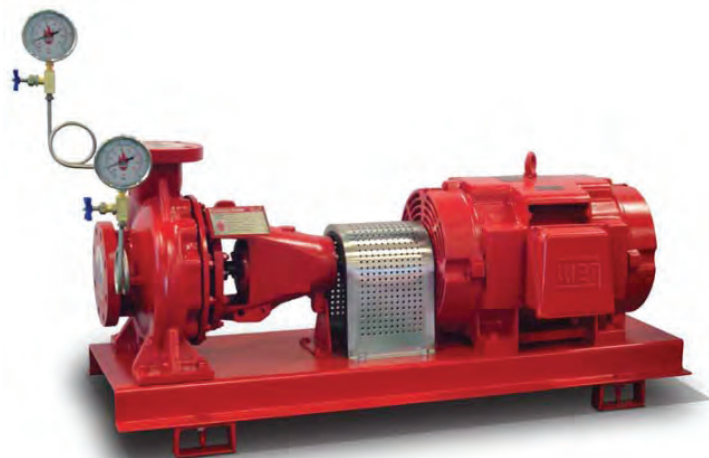
DIESEL DRIVEN CENTRIFUGAL FIRE PUMP

We offer listed Centrifugal Fire Pump Skids that meet every fire protection need. Driven by Listed & Approved Diesel Engines. Well aligned and Coupled for Direct Operation. Skid Packages are Pre-Tested and Inspected thoroughly before release to customers. One piece base plate with Anchor Bolt holes. Engineered, coated, hot rolled mild steel to resist corrosion and abrasion. Heavy Fabricated C-Channel Structure constructed to provide proper alignment of Pump with Diesel Engine or Pump. Compact skid Design with Small Foot-Print for Retrofit High standard of Quality in material Construction finish and Workmanship.



MOTOR DRIVEN CENTRIFUGAL FIRE PUMP

We offer listed Centrifugal Fire Pump Skids that meet every fire protection need. Driven by Listed & Approved Fire Pump Electric Motors. Well aligned and Coupled for Direct Operation. Skid Packages are Pre-Tested and Inspected thoroughly before release to customers. One piece base plate with Anchor Bolt holes. Engineered, coated, hot rolled mild steel to resist corrosion and abrasion. Heavy Fabricated Steel base plate rigidly constructed to provide proper alignment of pump & motor. Compact skid Design with Small Foot-Print for Retrofit. High standard of Quality in material Construction finish and Workmanship.



SPRINKLER



Series TY-L — 5.6 and 8.0 K-factor Upright, Pendent, and Recessed Pendent Sprinklers Standard Response, Standard Coverage



Series TY-FRL — 2.8, 5.6, and 8.0 K-factor Upright, Pendent, and Recessed Pendent Sprinklers Quick Response, Standard Coverage



Series TY-L – 5.6 K-factor Horizontal Sidewall Sprinkler Standard Response, Standard Coverage



Series TY-FRL – 5.6 K-factor Horizontal Sidewall Sprinkler Quick Response, Standard Coverage

SPRINKLER



Series TY-B, 5.6 K-factor
Upright, Pendent, and Recessed Pendent Sprinklers
Standard Response, Standard Coverage



Series TY-FRB — 2.8, 4.2, 5.6, and 8.0 K-Factor
Upright, Pendent, and Recessed Pendent Sprinklers
Quick Response, Standard Coverage



Series RFII — 5.6 K-factor
"Royal Flush II" Concealed Pendent Sprinklers
Quick & Standard Response, Standard
Coverage



Concealed Sprinkler

EXPOSED FIRE DEPT. INLET CONNECTION

300 PSI RATED PRESSURE

Two way-single clapper-back 4" x 2 1/2"

Used as an auxiliary inlet connection providing 500 GPM minimum to supplement the fire protection water supply. Swing clapper provides full waterway. Exposed design provides an economical method of satisfying Fire Dept. inlet requirements.

Standard equipment:

Cast brass two-way inlet body with single swing clapper and pin or rocker
Lug hose thread swivel; straight NPT outlet connection.



Plug and Chain

For Fire Dept. inlet connections. Prevents deposit of foreign material and protects female threads.

Standard equipment:

Forged brass plug with male hose thread.



FIRE FIGHTING CABINETS

صناديق الإطفاء من الحريق

WATER CABINETS

- Cabinet made of Steel
- Rubber Hose of 30 meter
- Available in manual or Automatic models
- Available in different Sizes and design to meet Architectural requirements.



- Cabinet made Stainless Steel (Other Stainless Steel types are available upon request.)
- Cabinets in stainless steel are Available with hairline or mirror
- Finish as per customer request.



FOAM / WATER CABINETS



FIRE CABINET WITH 1.5" SYNTHETIC HOSE & ACCESSORIES



EXTINGUISHER CABINETS

- Cabinet and door leaves are made of mild or stainless steel sheet with all around folded edges.
- There are different design for door leaves to suit the architectural engineering.
- Cabinets can be fitted with continuous piano hinges.
- Stainless steel hinges are available upon request.
- Cabinets and door leaves are painted with electrostatic powder paint oven baked to give protection against rust and to give smooth finish.
- Instruction sign in Arabic and English are silkscreen printed on the cabinet.
- Colors available in Red RAL 301 & Off white.
- Other colors are available upon request.
- Frame and door leaves are available in Aluminum or Stainless steel.



CABINETS ACCESSORIES

Hose reel discs are painted with electrostatic powder coating and oven baked at 180°C to 200°C.

Hose reel drum has formation of hydraulically pressed ribs to give extra strength and to avoid twisting. The outer edges are rolled over to give a safe handling edge on the outer rims and better appearance.

Automatic fire hose reels are available with an internal valve built into the hose reel unit which opens within 3 revolutions of the hose

reel as the hose is pulled out and closes when the hose is wound back to the reel.



Landing Valve

Body is Chrome plated and Hand wheel with Steel, Epoxy coated

Working Pressure: 16 bar

- 1.5"
- 2.5"



Nozzle

Type: Plastic
Operation: 3 way control.
(Jet/Spray/Shut off)



Nozzle

Type : Brass & Chrome Plated
Operation : 3 way control.
(Jet/Spray/Shut off)

FIRE EXTINGUISHER

طفايات الحريق



DRY POWDER EXTINGUISHER



FOAM EXTINGUISHER



CO2 EXTINGUISHER



VALVES

الصمامات



NIBCO

Mueller Co.

P POTTER
The Symbol of Protection



VALVES

ANGLE HOSE VALVE

Used with a Fire Hose Rack Assembly, or as a Fire Dept. outlet connection.

Standard equipment:

Female NPT inlet and outlet forged brass valve. Red hand wheel.



OS&Y GATE VALVE

It is identified as a local control valve. It is used as a shut-off valve on water feed lines to disconnect (control) in-situ zones. A butterfly valve or rising stem gate valve is used to shut off or control. A rising stem valve in full open position is of a gate valve that does not disturb uniform flow, enables the open position to be observed with the pin moving up and down, and allows for electrical tracking with a tracking (supervisory) switch attached. It has less hydraulic loss compared to a butterfly valve



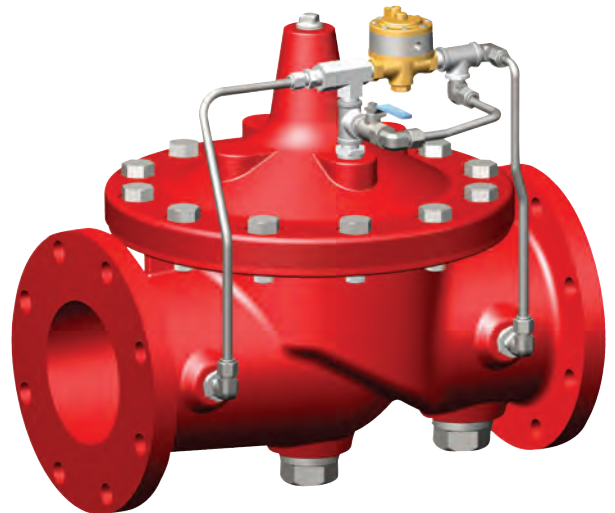
WET ALARM VALVE

The wet alarm valve is designed for applications where the water is unlikely to freeze. The water staying pressurized in the pipes is released over the fire area after the sprinkler is activated due to fire. The pressurized water system is not only feed continuously, but also fills in the retard chamber. After the chamber is filled, the pressure switch on the chamber is actuated. The pressure switch sends the alarm information to the fire warning system or the automation system. After the pressure switch is actuated, the water is delivered to the water-motor gong and releases a mechanical alarm.



DELUGE VALVE

The Cla-Val Model 100G/2100G Deluge Valve is designed for use in controlling water flow to Deluge, Pre-Action, or Foam-Water type fire protection sprinkler systems. This valve is UL Listed in "Special Systems Water Control Valves Class I (VLFT) for both vertical and horizontal installation applications. The Model 100G/2100G is UL Listed for operation manually, electronically, with hydraulic or pneumatic pilot control system for a wet pilot line of sprinklers. It is a hydraulically-operated, diaphragm-actuated, globe or angle pattern Deluge Valve. It consists of three major components: the body, the cover, and the diaphragm assembly. The only moving part is the diaphragm assembly. Packless construction and simplicity of design assures long service life and dependable low maintenance for this valve. All ferrous parts are fusion epoxy coated internally and externally for added corrosion resistance, along with a Dura Kleen™ stem.



RCW DELUGE SYSTEM

The Globe Model RCW is a hydraulically operated external resetting differential latching style valve designed for use where quick-opening and total flooding of sprinkler system piping is desired. The Model RCW valve is used as an automatic water control valve in deluge applications, including electric, wet pilot, dry pilot actuation. The Model RCW valve serves as the primary water control valve installed in the water supply to a deluge sprinkler system incorporating open sprinklers or nozzles.



GROOVED TYPE BUTTERFLY VALVE

is classified as a fire protection control valve that is Underwriters Laboratories listed and FM Approved for bubble-tight shutoff at 300 PSI water working pressure. Grooved ends are compatible with IPS pipe.

- Valve pressure rating 300 psi wwp
- EPDM encapsulated ductile iron disc
- Stainless steel stem with metal bushings
- Available with (suffix 8N) or without (suffix 4N) internal monitor switches
- Available in-ground post (suffix GP) or wall post (suffix WP) versions - UL only
- Operating mechanism: Manual gear operator
- UL/ULC Listed
- FM Approved
- UL Listed for Indoor and Outdoor Service
- MSS SP-25 (markings)
- Approved by New York City MEA 997--E, Vol.2 when assembled with appropriate NYC indicator flag
- California State Fire Marshal Listing No. 770-1243:101
- Size range 22/1-» to 10»



VALVES

CAST IRON GATE VALVE

provides full flow with minimal pressure drop. The flanged cast iron gate valve is designed to be the main control valve in an automatic fire sprinkler system.

- 175 psi/12.1 bar non-shock water working pressure (WWP)
- Outside screw and yoke
- Bolted bonnet
- Solid wedge
- Iron body, bronze mounted trim (IBBM)
- Class 125 flanged end connections
- Use in U.S. drinking water applications is prohibited after January 3, 2014
- Conforms to MSS SP-70
- Listed by UL/ULC (UL262)
- FM Approved
- Approved by New York City BSA 14369--SA
- Size range 22/1-» to 12»



BRONZE GATE VALVE

is specifically designed for main control of an automatic fire sprinkler system. Usually, it is employed to isolate an individual floor of a multi-floor building as the floor's main control valve. Rising stem gate valves are used when positive shutoff is required and a quick visual indicator of open/closed position is necessary.

- Rising stem
- Solid wedge
- Screw-over bonnet
- Outside screw and yoke
- Class 125 threaded female end connections
- Dezincification resistant
- Use in U.S. drinking water applications is prohibited after January 3, 2014
- FM Approved
- Approved by New York City BSA 14369--SA
- 175 psi/12.1 bar non-shock water working pressure (WWP)



PREACTION SYSTEMS

Viking's Model G Preaction Valves and Systems are unique in their simplicity and dependability. They are a preferred choice where it is important to control accidental water discharge due to inadvertent damage to the sprinkler piping. With a small,

lightweight profile, these modular packages are completely pre-assembled and are ideal for protecting damage-sensitive areas such as computer rooms, libraries, museums, and freezers.

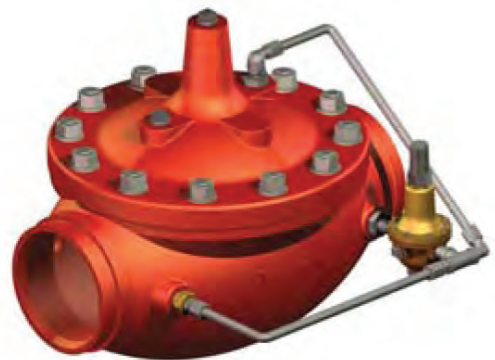
Complete, pre-assembled preaction valve and trim includes the following :

- Model G Valve
- Model G Trim Package
- Water Supply Control Valve
- Air Pressure Supervisory Switch (PS402-A)
- Alarm Pressure Switch (PS101-A)
- Air and Water Pressure Gauges
- 12 inch section of Galvanized Schedule 10 Pipe with Coupling (G-2000P has a 10 inch section of pipe)



PRESSURE REDUCING VALVES

- UL Listed, ULC Listed, MEA Approved
- Globe or Angle Pattern
- Proven Reliable Design
- Available in Cast Bronze, Ductile Iron and Cast Steel
- Accurate Pressure Control
- In Line Service
- (8" - 1 1/2") Grooved Ends



PRESSURE RELIEF VALVE

- UL Listed / ULC Listed
- Factory Mutual Approved
- Fast Opening to Maintain Steady Line Pressure
- Accommodates Wide Range of Flow Rates
- Closes Gradually for Surge-Free Operation
- Adjustable Pressure Settings, Not Affected by Pressure At Valve Discharge



SWING CHECK VALVES

- Gravity operated.
- Sizes: 2 1/2" – 24" / DN65 – DN300.
- UL Listed and FM Approved.
- 200psig/14barg.
- Designs available: A2120-BB Bronze Disc and Seat Rings; A2122-B1 Rubber Disc Facing and Bronze Seat Ring.
- Cast Iron Valve Body, ASTM A-126 Class B.
- Two-part liquid epoxy coating for superior corrosion resistance.
- Cast Iron Cover has lifting lug.
- Operating parts of bronze and stainless steel, Cover Nuts and Bolts are electro galvanized steel to resist corrosion.
- Internal parts serviceable without removing valve from line.
- Tapping bosses both sides of body for connecting by-pass.
- Drain plug under inlet end for connecting drain valve.
- End connection: Flanged ANS B16.1 Class 125.



VALVES

TEST AND DRAIN VALVE

Lightweight and compact, the Model 1000 TESTanDRAIN® is a 300 PSI rated, single handle

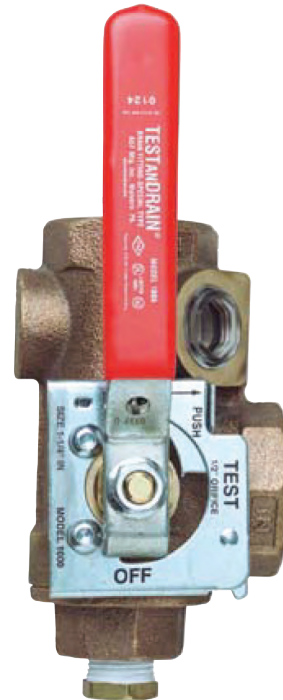
Ball valve specifically designed to provide Both the test and express drain function required

For a wet fire sprinkler system. The Model 1000 TESTanDRAIN®

Meets all the requirements of NFPA 13D,

NFPA 13R, and NFPA 13. It Features a tamper resistant test orifice, integral tamper resistant sight glasses, and a tapped port for system access.

The Model 1000 is available in 1/2", 1", 1 1/2", and 2" sizes in both NPT and BSPT with all specifiable orifice sizes: 3/8" (2.8K), 7/16" (4.2K), 1/2" (5.6K), 17/32" (8.0K), 5/8" (ELO, 11.2K), 1" (ESFR, 14.0K), and K25.



VALVES

VSR Vane type Waterflow Alarm switch with Retard

UL, CUL and CSFM Listed, FM Approved, LPCB Approved, For CE Marked (EN12259-5) / VdS Approved model use VSR-EU

Service Pressure:

450 PSI (31 BAR) - UL

Flow Sensitivity Range for Signal:

410- GPM (1538- LPM) - UL

Maximum Surge:

18 FPS (5.5 m/s)

Contact Ratings:

Two sets of SPDT (Form C)

10.0 Amps at 125/250VAC

2.0 Amps at 30VDC Resistive

10 mAmps min. at 24VDC

Conduit Entrances:

Two knockouts provided for 1/2" conduit. Individual switch compartments suitable for dissimilar voltages.

Environmental Specifications:

NEMA 4/IP54 Rated Enclosure suitable for

indoor or outdoor use with factory installed gasket and die-cast housing when used with appropriate conduit fitting.

Temperature Range:

40°F - 120°F, (4.5°C - 49°C) - UL

Non-corrosive sleeve factory installed in saddle.



TAMPER SWITCHES

The Potter OSYSU-2 is used to monitor the open position of an OS&Y (outside screw and yoke) type gate valve. This device contains two sets of SPDT (Form C) contacts. These switches mount conveniently to most OS&Y valves ranging in size from 2" to 12" (50mm to 300mm). They will mount on some valves as small as 1 1/2" (38mm). The cover is held in place by two tamper resistant screws that require a special tool to remove.



KITCHEN HOOD

Fire Suppression

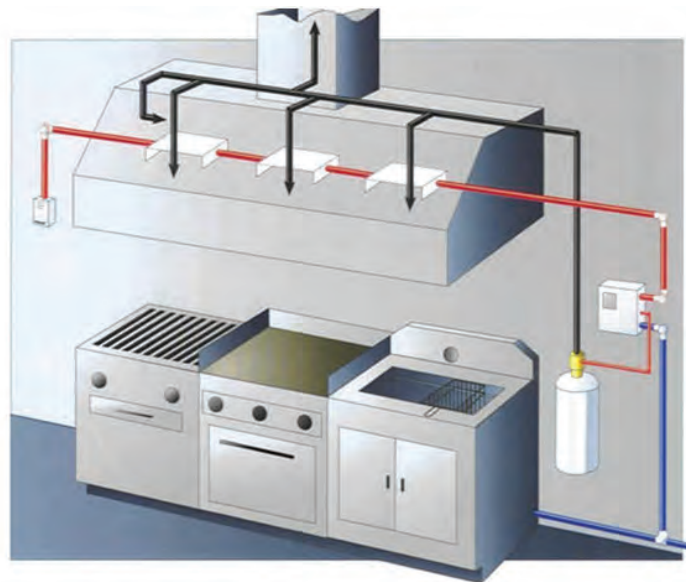
أنظمة مكافحة الحريق في المطابخ

KITCHEN HOOD FIRE SUPPRESSION SYSTEM

WET CHEMICAL SYSTEMS

A wet chemical system is the most commonly used fire suppression system to extinguish cooking oil fires. It is the primary source of extinguishing kitchen fires. The wet chemicals suppress fire by a process called saponification. Saponification is a chemical reaction that occurs when a vegetable oil or animal fat is mixed with a strong alkali. Saponification value is

a measure of the amount of potassium hydroxide needed to neutralize one gram of fat or oil. The most common types of cooking media, i.e., animal fats (or lard), vegetable oils, and peanut oils, have similar saponification values. Other fats, such as cocoa, have substantially higher saponification values and therefore are more difficult to extinguish



DRY CHEMICAL SYSTEMS

A dry chemical system is primarily used to extinguish flammable liquid fires that are not of appreciable depth. Because it is non-conductive, it can also be used on flammable liquid fires involving live electrical equipment. Dry chemical interrupts the chemical reaction of fire by removing the oxygen from the source. When the multipurpose dry

chemical is discharged into burning ordinary combustible, the decomposed monammonium phosphate leaves a sticky residue (metaphosphoric acid) on the burning material. This residue seals glowing material from the oxygen, thus helping extinguish the fire and prevent re-ignition.

SECURITY SYSTEMS

الأنظمة الأمنية

FIRE ALARM SYSTEMS

أنظمة الإنذار المبكر ضد الحريق



ALARM SYSTEMS

PANELS, DETECTORS & ANCILLARIES



PANELS, DETECTORS & ANCILLARIES



ALARM SYSTEMS

PANELS, DETECTORS & ANCILLARIES

GENT
by Honeywell



PANELS, DETECTORS & ANCILLARIES

ESSER
by Honeywell



CCTV

أنظمة الدوائر التلفزيونية المغلقة

CCTV & CATV



CCTV

ALSHRIQI offers a wide variety of cameras, guaranteeing that ALSHRIQI has a solution that suits your specific needs. Regular cameras, day-night cameras, specialized cameras, high-resolution cameras, night-vision cameras, and domes are carefully selected, depending on the surveillance application. To complement the selected system and to meet the user's continued needs, ALSHRIQI installs control and monitoring equipment by way of switchers, multiplexers, digital video recorders, and high-density matrices. With the aid of smart video motion detection, we use digital signal processing and digital video technology in conjunction with customized software in order to provide dependable

event detection and analysis. Our smart, powerful systems not only make you more secure but put you more in control of your business. They allow you to accurately sense an alarm event instantaneously for timely intervention or scan stored video for needed last minute information. The analytical aspects of our systems provide critical input for better security management and prevention. Smart applications like license plate recognition, people counting, face recognition, and under vehicle surveillance (UVSS) are also available as packages and can be provided for further protection from potential threats.

CCTV & CATV

CATV

Interactive TV allows for facility-wide messaging, user requested information, video on demand, internet browsing, and gaming. It is included with our packages . CATV's individual or channelized digital/ analog systems guarantee more reliable reception of free-to-air or subscribed signals from satellites and terrestrial stations, of TV, and FM Radio broadcasts. These systems provide dependable, superior- quality reception at all locations by utilizing distribution networks of TV/ FM signal, in house video, and multimedia content.



DOOR PHONES

It is only natural for us all to want to identify who is at the door before we allow them into our homes. In gated villas and apartment complexes, door phone systems provide the audio or audiovisual means to communicate with the visitor and remotely unlock the gate or door.

ALSHRIQI provides many types of interactive communication systems. Door phone stations are the most commonly used. They offer audio/video capabilities with a call button, intercom, and/or camera. The indoor stations feature intercom, door unlock button, alarm button, and/or monitor screen with/without camera pan/tilt for proper verification and unlocking the door from within the building. These are especially perfect for environmentally-

protected enclosures. An alarm system is also incorporated to alert others or security personnel of possible threats.

We offer solutions for clients with simple, single-dwelling systems as well as for large, residential complexes. Our systems can secure and manage several gate stations and many apartments with access control, security guard consoles, alarm management systems, inter-apartment communications, PABX/Telephone interfaces, etc.



INTERCOM / PABX

ALSHRIQI provides systems for analog/digital telephony, internet telephony, and Voice over IP solutions to enhance the individual communication experience and maximize the utilization of available resources. In addition, standard PABX/Intercom systems are also available. VoIP lines use wireless LAN networks and provide a high level of flexibility and

mobility that is not possible with standard intercom and wired systems.

They are more affordable than standard communication lines, and are portable if travel is needed – most systems are just the size of a simple thumb drive. VoIP lines are also very functional, being powerful enough to even handle video conferencing.



ACCESS CONTROL

أنظمة التحكم في صلاحية الدخول

ACCESS CONTROL



ACCESS CONTROL SYSTEMS

As a business owner, you are responsible for who enters your property. You determine who you allow to enter and under what conditions. Access control systems provide you with features that allow you to do just that.

ALSHRIQI offers a wide variety of readers, such as magnetic, proximity, and biometric. This allows each facility to fully customize the level of security that they wish to implement. To provide more security, smart, programmable controllers with robust firmware faithfully analyze each transaction as per the carefully set parameters. Powerful, user-friendly software helps you

set the exact criteria for each individual entering your facility.

Access systems utilize the networking of controllers which provide scalability from a few doors and users to hundreds of doors and thousands of users. A wide array of biometric technologies are available if you require positive identification in order to enter the premises (e.g., fingerprint, hand, iris, face). You are in complete control of the level of security you wish to utilize. Comprehensive reports and complete audit trails can be generated by the system for the user's record and for analysis to improve system management.



TURNSTILES AND REVOLVING DOORS

As a complementary system to access control, turnstiles and revolving doors provide management and regulation of the flow of people passing through the portals in an orderly manner and in the right direction. Numerous aesthetic designs are available to suit the facility's décor and level of security desired. The most commonly chosen access

controls are waist- height or full-height turnstiles and revolving doors. ALSHRIQI also offers application-specific devices like indoor or outdoor installation, number of people, etc. Customization is the key to a highly-operational access control system.

FIRE DOORS

أبواب الحريق

SWINGING-TYPE FIRE DOORS

- Door Frames for use as a component in fire door assemblies that meet the requirements of UL10C:
- Three sided steel frame with or without transoms (single swing or pair).
- Door Frames for use as a component in fire door assemblies that meet the requirements of UL10B (neutral pressure)
- Three sided frames with or without transom (single swing or pair).
- Door frames: Welded three sided single frames for use in 33 ,2/1-1 ,4/
- hr locations. Maximum size of frame: 1200 mm in width and 2261 mm in height.

Door frames:

- Welded three sided pair
- type frames for use in ¾,13 ,2/1- hr locations.
- Maximum frame size is 2313 mm in width and 2269 mm in height.



Max Rating	Opening Type
2 Hr	Single or Pair With Astragal, Single Point Lock/ Flush Bolts, Single Rim/ Mortise Fire Exit Hardware, Door with Automatic Louver, Max 100 in2 Glazing
3 Hr	Single with Single Point Lock/Rim, Mortise Fire Exit Hardware 450°F Temperature Rise
1 Hr	Single with Single Point Lock/Rim, Mortise Fire Exit Hardware 450°F Temp Rise Door Pair with Astragal Single Point Lock, Mortise Fire Exit Hardware, Flush Bolts / Vertical Rod Fire Exit Hardware 450°F Temp Rise Door

OCCUPATIONAL SAFETY

السلامة المهنية

3M

SCOTT
SAFETY

Vaultex

NOMADIC

SAFETY JOGGER
SHOES & WEAR

Honeywell
THE POWER OF CONNECTED

SALISBURY
by Honeywell

MUTI-GAS MONITOR

GAS ALERT MAX XT II CONFINED SPACE MUTI-GAS MONITOR, XT-XWHM-Y-NA

The Gas Alert Max XT II is a great, feature-packed multi-gas detector, to protect you and your workers from explosive or toxic gases and vapors, no matter where you are working. Comes completely charged, calibrated, and ready to use out of the box.

Clearly displaying gas levels on the bright LCD screen, it constantly monitors these atmospheric gas levels:



Sensors:

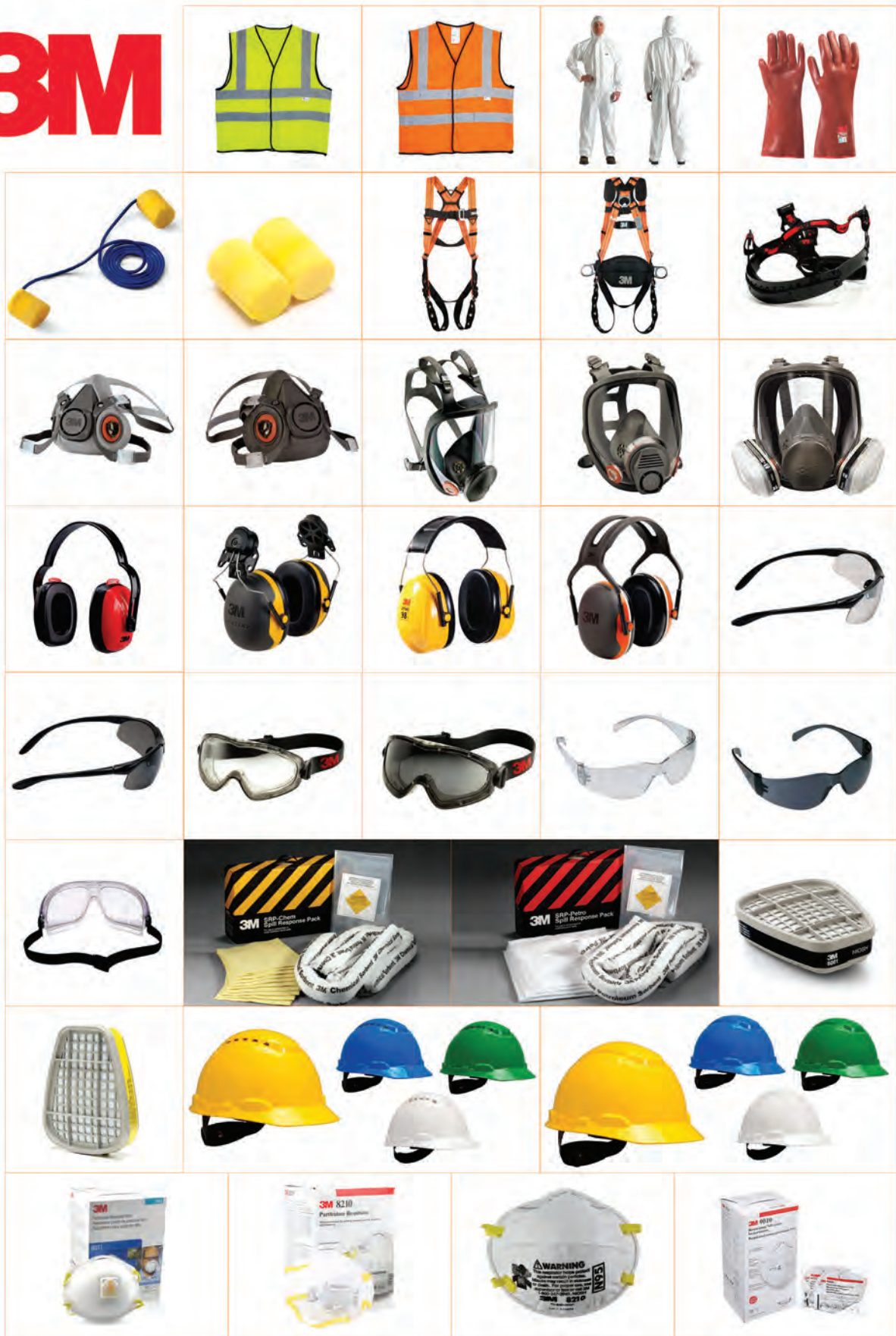
- H₂S: 0200- ppm (Measuring Range), 1 ppm resolution
- CO: 01000- ppm (Measuring Range), 1 ppm resolution
- O₂: 030.0- percent (Measuring Range), 0.1 percent resolution
- Combustible Gasses: 0100- percent LEL (Measuring Range), 1 percent resolution

Detection:

Flammable, combustible and explosive gases will all be picked up, and should levels reach anything approaching dangerous the Gas Alert will set off a warning alarm

- Oxygen Detection: The O₂ monitor will alert you should this vital gas reach low levels, or overly high levels that could result in combustion.
- Carbon Monoxide Detection: Colorless, odorless and a non-irritant, this dangerous gas arises from many different pieces of equipment: fireplaces, propane fueled equipment, heaters, generators, welding kits, etc.
- Hydrogen Sulfide Detection: Toxic and flammable, H₂S is an irritant that can cause respiratory failure if its presence goes undetected and the strong aroma of eggs is not detectable after prolonged exposure LEL Detection: Sampling for a broad range of potentially combustible gases helps prevent non-specific onsite buildup of these compounds, which can come from a variety of work place materials

3M



SALISBURY

by Honeywell





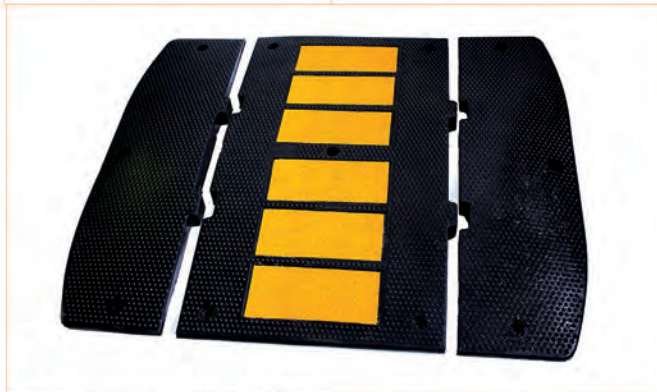






ROAD TRAFFIC SAFETY

سلامة الطرق



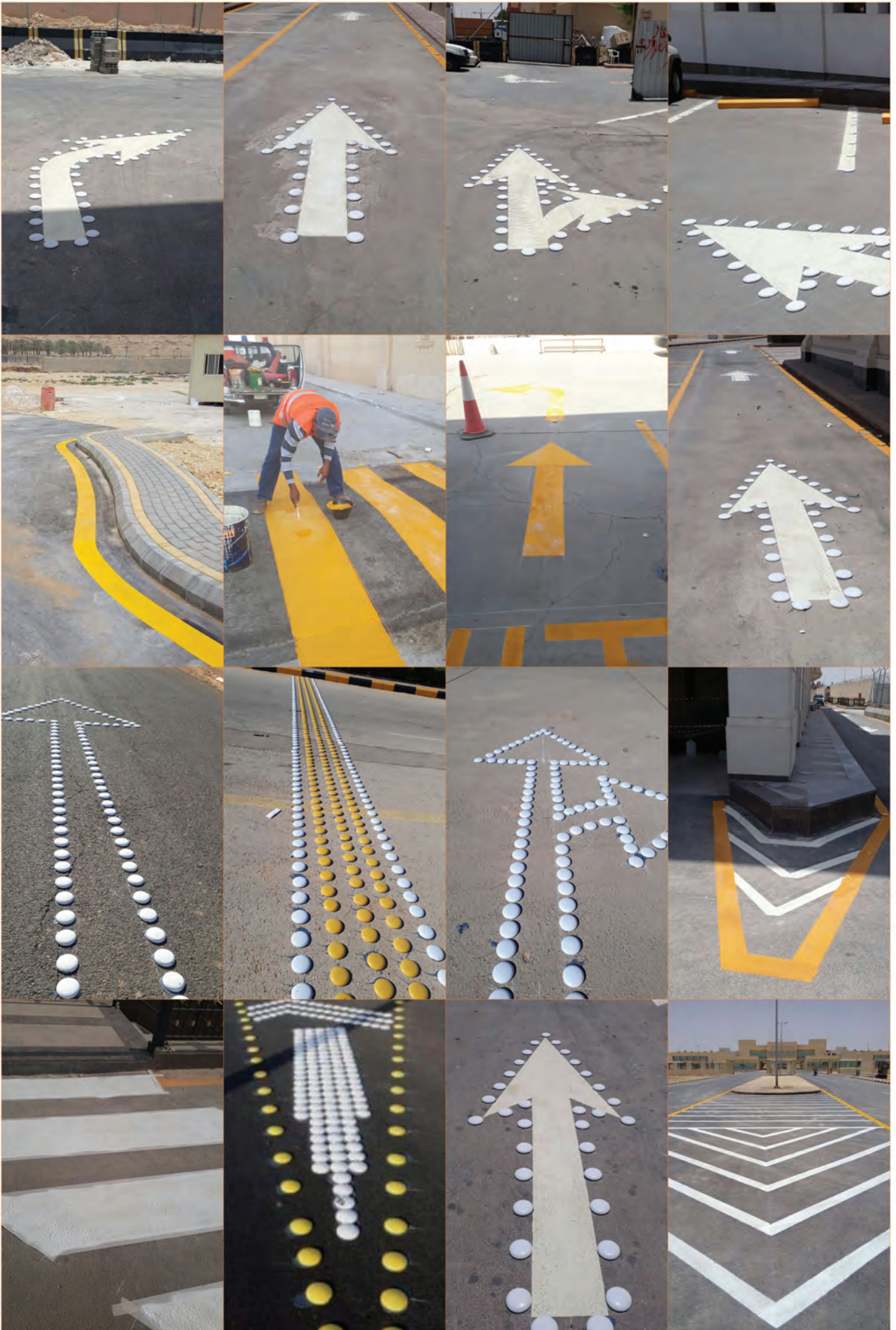












- توريد وتركيب وصيانة شبكات الإنذار المعنون والعادي .
- توريد وتركيب وصيانة أنظمة الإطفاء اليدوي والآلي .
- توريد وتركيب وصيانة أنظمة الإطفاء بالغاز
- توريد وتركيب وتشغيل أنظمة الدوائر التلفزيونية المغلقة CCTV
- و أنظمة التحكم في صلاحية الدخول ACCESS CONTROL
- عقود صيانة للمنشآت والممتلكات .
- بيع أجهزة ومعدات السلامة .

المكتب الرئيسي : الرياض - الملز - شارع الظهران
تليفاكس : +966 11 2920042
جوال : +966 590939984 / +966 535434737
(واصل) : 9016 الملز - شارع الظهران - رقم 1 - الرياض 3987 - 12642

Head Office : Riyadh - Malaz - Aldhahran St.
TelFax : +966 11 2920042
Mobile : +966 590939984 / +966 535434737
(Wasel) : 9016 Malaz - Dhahran St. - No. 1 - Riyadh 3987 - 12642

www.alshriqi-safety.com | info@alshriqi-safety.com

